



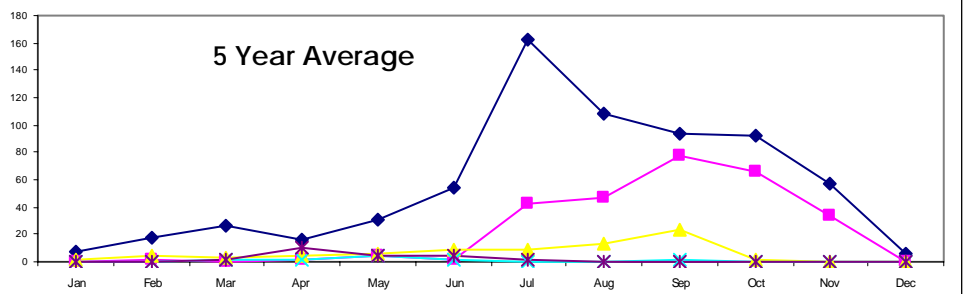
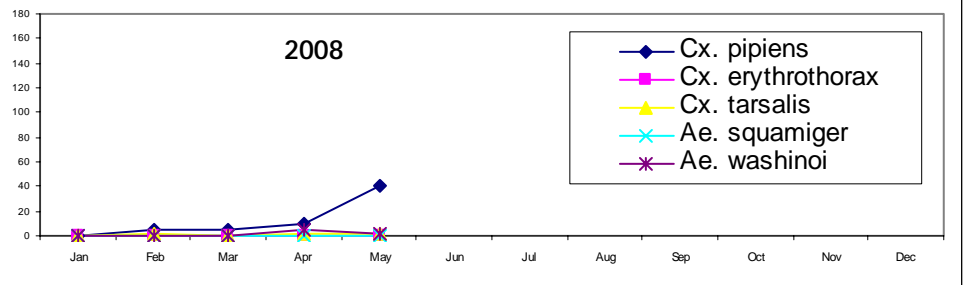
April 2008

Entomology Report

Table of Contents

Adult Mosquito Populations	1
District Name Change	1
Mosquito Control Operations	2
Excluding Rats from Homes	2
WNV Update	2
Meetings and Conferences	3
Eye on the Bay	3
Lyme Disease	3
Light Brown Apple Moth	4

Adult Mosquito Populations in CO2 Traps

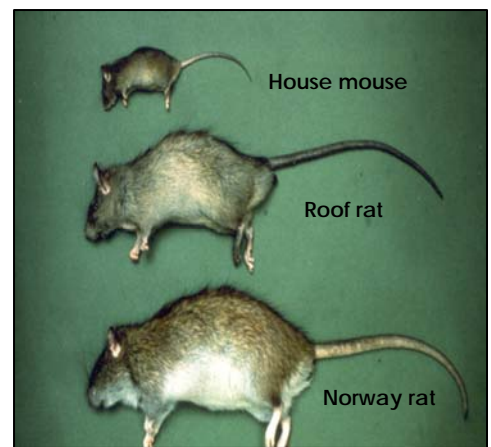


District Name Change

On April 9, the district officially changed its name from the "San Mateo County Mosquito Abatement District" to the "San Mateo County Mosquito and Vector Control District". The district has conducted surveillance for ticks and rodent-borne disease for the past 10 years, but now has also additional programs, including:

- Overseeing sewer baiting programs for Norway rats
- Conducting home inspections for rats
- Educating local residents on how to exclude rats from homes
- Dispensing information to residents about other wildlife

Programs for domestic rats were formerly the sole responsibility of the San Mateo County Health Department. Recently, the health department asked the district to assume responsibility for some of these services. The district will conduct inspections of residences and apartments containing less than 4 units. The county will retain responsibility for commercial establishments and larger apartment complexes. The district looks forward to providing residents with these services.



Commensal rodents in San Mateo County



Mosquito Control Operations

In April, mosquito control operations shifted focus from marshes and impounds to storm drain systems. The newly-purchased catch basin treatment vehicles have been put into service. Permanent staff began treating basins in April and will be assisted by seasonal hires beginning in May. Other sources treated in April included:

- 1,289 Backyard fishponds and fountains
- 305 containers
- 166 marshes and impounds
- 143 Utility vaults
- 88 neglected swimming pools
- Water under 15 buildings



Right-hand drive Jeep used to treat catch basins and storm drains

Excluding Rats from Homes



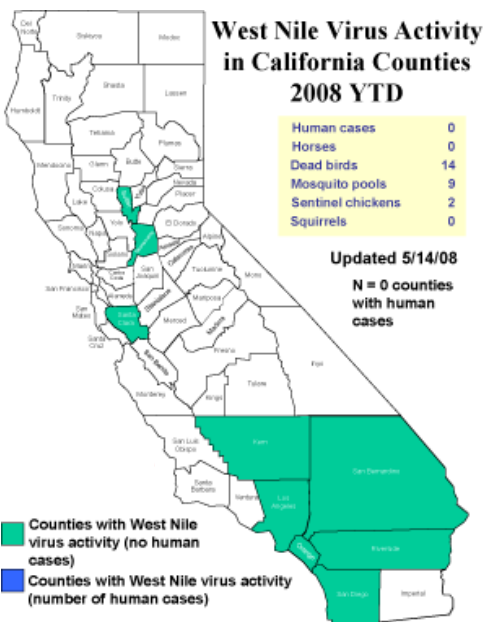
Rat droppings in an attic

The district now conducts home inspections and dispenses information on how to exclude or control rats. Roof rats are found throughout the county and are particularly abundant in areas with dense vegetation or food resources. Signs of rat activity include: the presence of droppings, gnaw marks or rub marks, piles of snail shells or partially gnawed fruit. Residents can reduce rat activity by removing attractants such as fallen fruit, spilled bird seed under feeders, or pet food. Information on how to avoid rat infestations can be obtained by calling the district at (650) 344-8592.



Roof rats can access homes through holes in vents as small as the diameter of a quarter.

West Nile Virus Update



In 2008, 14 dead birds have tested positive for West Nile Virus (WNV) in seven counties in California: Kern (1), Los Angeles (1), Orange (1), Sacramento (1), San Bernardino (1), San Diego (7), Santa Clara (1), and Sutter (1) counties. Nine positive mosquito pools were found in Riverside County and two sentinel chickens tested positive for WNV in Los Angeles County. A dead bird from Santa Clara County represents the only indicator of West Nile virus activity in the Bay Area so far this year. There have been no human cases of WNV in California in 2008. By this time last year, a human and a horse had become infected with WNV.

Thus far, in San Mateo County 115 dead birds have been reported. Of these, 24 were tested for WNV and none were found positive. Only one squirrel has been reported and tested, and it also tested negative for WNV.



Meetings and Conferences

Mosquito and Vector Control Association of California Quarterly Meeting

The district's Vector Ecologist attended quarterly meeting of the MVCAC on May 1st and 2nd. Dr. Peavey is currently a member of the association's Integrated Pest Management committee and gave a report on the development of a new state water board policy for regulation of wetlands and riparian areas. The State Water Resources Control Board regulates water quality throughout the state and is developing a plan for protecting wetlands and riparian areas on a watershed basis. MVCAC members plan to meet with the development team to ensure the board considers mosquito control issues.

Eye on the Bay

On May 1, 2008, the district was featured on a CBS 5 Eye on the Bay news segment entitled "Unusual Jobs." Eye on the Bay is a Bay Area entertainment and lifestyle show produced by KPIX. Host Brian Hackney, along with his very understanding producer and cameraman, were treated to a cold and muddy ride in the district



Screen captures taken from <http://cbs5.com/eyeonthebay>



Brian Hackney was quite taken with the hovercraft.



Angela Rory displays a mosquito larva in the lab.

hovercraft by Field Supervisor James Counts. After leaving the mudflats of the bay, the Eye on the Bay crew toured the lab and discussed mosquitoes with Assistant Vector Ecologist Angela Rory. Video of the segment can be viewed online at <http://cbs5.com/eyeonthebay>.

Lyme Disease

The district continues to survey for Lyme disease in San Mateo County recreational parks. Disease-causing spirochetes have been detected for the first time in ticks at two additional parks this year: Water Dog Lake in Belmont and Huddart Park in Woodside (refer to table). The average prevalence of infection for San Mateo County is between 1 and 3% for adults and nymphs.

Park	Trail	Tick Stage	# Collected	Positive	Prevalence
Huddart Park	Bay Tree	Nymph	91	0	0
	Richards Rd	Nymph	21	0	0
	Chickadee	Nymph	84	3	3.6%*
Waterdog Lake	Lake	Adults	114	1	0.8%

*Prevalence at this site is preliminary due to small sample size.



Adult female *I. pacificus*



We're on the web!
www.smcmad.org



"An Independent Special District
 Working for You Since 1916"

SAN MATEO COUNTY
 MOSQUITO AND VECTOR CONTROL

1351 Rollins Road
 Burlingame, CA 94010

Phone: 650-344-8592

Fax: 650-344-3843

www.smcmad.org

The San Mateo County Mosquito and Vector Control is an independent, Special District funded by a property tax voted in by individual cities. Our mission is to safeguard the health and comfort of our citizens through a planned program to reduce mosquitoes and other vectors in an environmentally responsible manner.

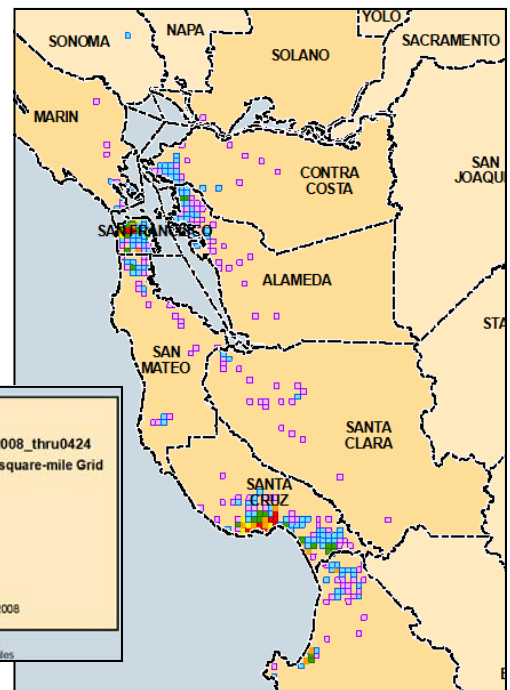
	Extension
Robert B. Gay, Manager	12
Chindi A. Peavey, Vector Ecologist	32
Angela M. Rory, Assistant Vector Ecologist	31
Angie Nakano, Assistant Vector Ecologist	44
Lauren Couture, Assistant Vector Ecologist	38
James Counts, Supervisor	16
Karen Williams, Finance Administrator	11

"A VECTOR is any animal that can transmit disease to animals or people."

Light Brown Apple Moth

The light brown apple moth (LBAM) is an exotic moth, native to Australia, that has been discovered in parts of the San Francisco Bay Area (refer to map). This pest feeds on a wide variety of plants, including but not limited to: apple, citrus, avocado, oak, willow, strawberry, grapes, and other ornamental shrubs and trees. To help stop the spread of LBAM, the California Department of Food and Agriculture (CDFA) will be spraying Checkmate LBAM-F. This is a pheromone that confuses the male moths and prevents them from finding a mate. This product has been used for over a decade in Australia and New Zealand with no known adverse human health affects. Checkmate LBAM-F was chosen to minimize impact on endangered species, as it is specific to LBAM. Treatment will occur over most of the Bay Area including parts of Alameda, Contra Costa, Marin, Monterey, Napa, San Francisco, San Mateo, Santa Clara, and Solano counties.

Visit the California Department of Food and Agriculture LBAM website at: www.cdfa.ca.gov/lbam to sign up online for treatment schedules, delay information, and rescheduling. If you prefer to contact the CDFA via telephone for scheduling information, there is a toll-free hotline: **1-800-491-1899**.



LBAM Distribution & Density in California, 1/2/08—4/24/08*
 *excerpt from map created by United States Department of Agriculture Animal and Plant Health Inspection Service